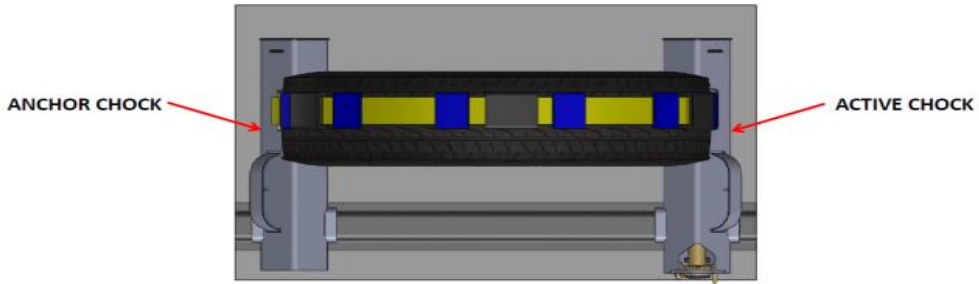


Standard Car Truck, Hybrid Lo-Pro™ Chock Application Instructions



Application: Chock Placement Positioning the Hybrid Lo-Pro™ Devices

Placement: A Hybrid Lo-Pro™ chock set includes one (1) Left-hand (anchor chock) and one (1) Right-hand (active chock w/ Strap). **Two (2) sets are required per vehicle.** The chocks secure to the railcar tie-down track.



Example of Hybrid Lo-Pro Chocks applied to a wheel



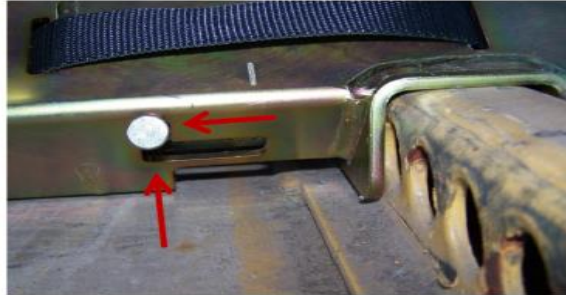
Application: STEP 1 Disengage the Left-hand Chock's Locking Mechanism

Step # 1: Starting with the Left-hand Hybrid Lo-Pro™ chock, pull-back on the Locking Pin Release and pull up so as to catch vertical slot 'cocked'.



Example of the Release Lever in 'locked' position,

LOCKED



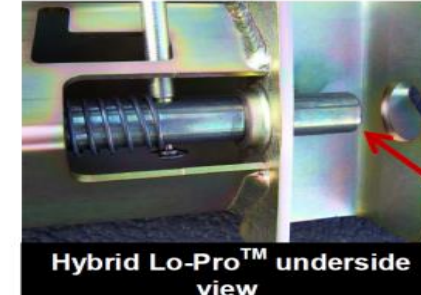
Pull back on the Release Lever and pull up so as to catch vertical slot 'cocked' position.

DISENGAGED/COCKED

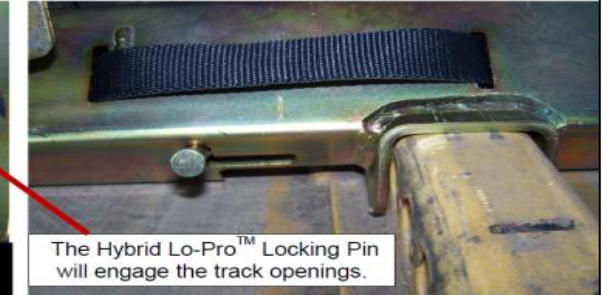


Application: STEP 2 Position the Left-hand Lo-Pro™ Chock

Step # 2: With the Release Lever disengaged, position the Left-hand Lo-Pro™ on the railcar tie-down track as close to the vehicle wheel as possible*.



Hybrid Lo-Pro™ underside view



The Hybrid Lo-Pro™ Locking Pin will engage the track openings.

Position the Hybrid Lo-Pro™ as close to the vehicle wheel as possible*.

* AAR Guidelines allow up to a 3/4" space between the chock and the vehicle wheel. Always follow the vehicle manufacturer securement guidelines.



Application: STEP 3 Secure the Locking Mechanisms

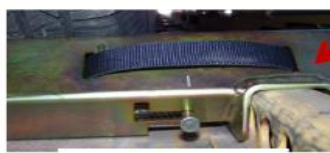
Step # 3: Push the Release Lever down to 'Locking' position. Move chock back from tire until Locking Pin Engages/Locks into Chock Track.



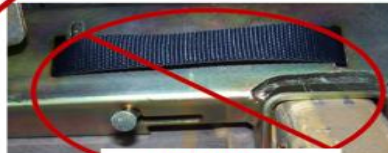
Push the Release Lever down to lock in place.



When fully locked, the Release Lever is in-line w/ Alignment Mark.



CORRECT !!!

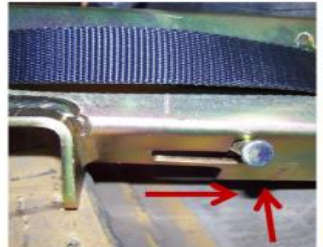


INCORRECT



Application: STEP 4 Repeat steps 1 through 3 with the Right-hand Lo-Pro™ chock.

Step # 4: Repeat steps 1, 2 and 3 to secure the Right-hand chock to the railcar tie-down track.



STEP 1

Disengage:

Pull back on the Release Lever and pull up so as to catch vertical slot 'cocked' position.



STEP 2

Position:

Set the Hybrid Lo-Pro™ chock in place against tire, Release Lever.



STEP 3

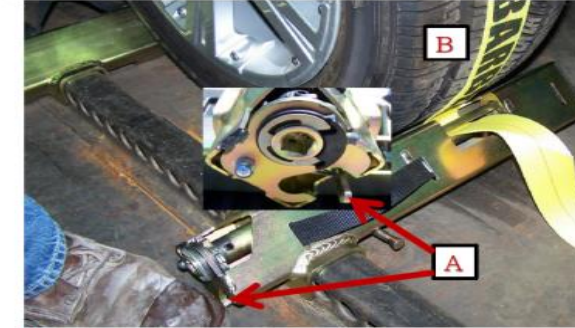
Lock:

Move the chock away from tire until Locking Pin engages/locks into Chock Track... in-line w/ alignment mark.

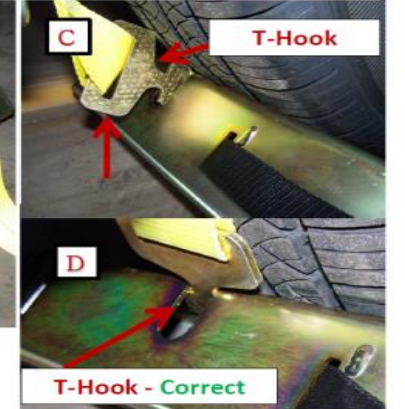


Application: STEP 5 Secure the J-hook.

Step # 5: Pull the strap over the tire and affix the T-Hook onto the Left-Hand Chock Torque Tube.



A) Step on the Release Pawl Lever to unwind the strap.
B) Pull the strap over the tire.
C) Hook the T-Hook to the Slot in Tube of the Left-Hand (anchor) Chock.
D) Assure T-Hook is turned in slot and flush against Tire.



T-Hook - Correct



Application: STEP 6 Ensure the Strap is Properly Positioned.

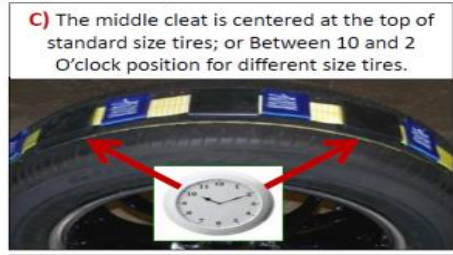
Step # 6: Center the strap over the middle of the tire, with the Cleat Tread Lugs engaged in the tire groove. Ensure the Strap is pulled through torque tube neatly and not twisted.



A) The strap is centered in the middle of the tire.



B) Cleat Tread Retention Lugs are engaged into the tire groove.



C) The middle cleat is centered at the top of standard size tires; or Between 10 and 2 O'clock position for different size tires.



D) Ensure the strap is pulled through the Torque tube, not twisted or pinched.



Application: STEP 7 Tighten the Right-Hand Adjustable Chock Strap

Step # 7: Pull the strap slack away from the T-hook. Then ratchet the Right-Hand adjustable chock to tighten the strap until there is a slight compression of the tire. Then, further tighten **3 CLICKS**.



T-Hook

Starting from the T-hook, pull the strap slack toward the Right-hand adjustable chock.



Tighten the Right-hand chock by rotating the wrench counter-clockwise.



Removal & Storage: Releasing the Hybrid Lo-Pro™ from the tie-down track.

Removal: Release the chocks from the tie-down tracks. Wrap the cleat strap around the Right-hand chock. Store in the provided side screen chock pans.



Push the Release Pawl Lever down with your foot to release the strap.

Step 1



Pull back on the Release Lever and pull up so as to catch vertical slot 'cocked' position. Remove Chock.

Step 2



Un-clasp the T-hook, then wrap the strap around the right-hand Lo-Pro Chock.

Step 3



Store Lo-Pro™s in the railcar Chock Box. *Wrap the cleat strap around the right-hand chock.

Step 4