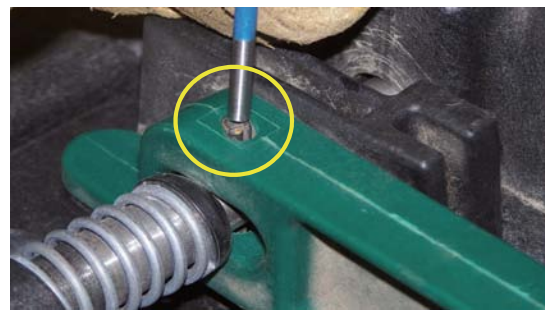


The Sta-Put Chock has been designed to be repaired on-site and not have to be sent to be reconditioned.

Release Lever (ZT632-Red/GRN) Replacement

Tools Required: 5/32" - Punch
Hammer



1) Hammer Roll Pin out...



2) It may be necessary to center Roll Pin to thru-hole in Articulation (as shown).



3) Pull Back on Release Lever disengaging Latching Pin. (May have to pry back if broken too close to Pin)



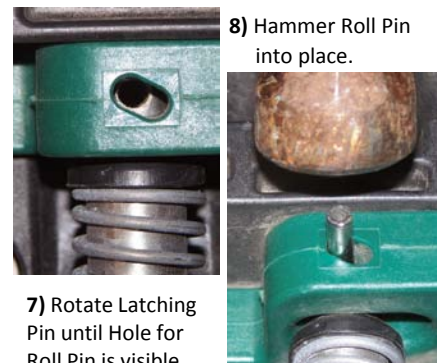
4) Remove Latching Pin from rear of Articulation.



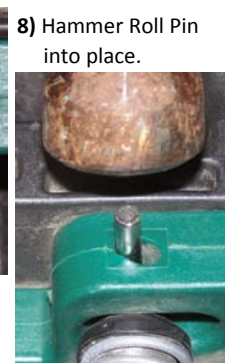
5) Replace Release Lever and re-position Spring and Follower Ball.



6) Insert Latching Pin.



7) Rotate Latching Pin until Hole for Roll Pin is visible.



8) Hammer Roll Pin into place.

Teeth (ZT-637 / ZT-636) Replacement

Tools Required: 1/2" Deep Wall Socket
3/8"-drive Ratchet



1) Loosen and remove Nut



2) Remove and replace Teeth



3) Insert Carriage Bolt Replace and start Nut (assure washer is present)



4) Tighten - but do not overtighten as threads can strip.

Long Lever/Face Plate ZT-628 - Strap ZT-654-FX Replacement

Tools Required: 3/4" Deep Wall Socket
3/4" Socket - 1/2" drive
1/2"-drive Ratchet
3/8"-drive Ratchet



1) Loosen Nut from 1/2"-Face Plate Pivot Bolt



2) Slide Bolt out - Replace Face Plate and/or Strap.



3) Insert Pivot Bolt through Face Plate/Strap



4) Assure that Cleats are correct to engage tire tread - seam facing up.



5) Ratchet tight. THEN LOOSEN 1/2-1 Turn so Faceplates move freely.

Lateral Restraint ZT-630-RED/GRN/Side Handle ZT-631-RED/GRN Replacement

Tools Required: 3/4" Deep Wall Socket 3/8"-drive Ratchet
3/4" Socket - 1/2" drive 1/2"-drive Ratchet
9/16" Deep Wall Socket 9/16" Combination Wrench

1) Remove Face Plate Pivot Bolt as stated above...

2) Remove 3/8" Bolt.

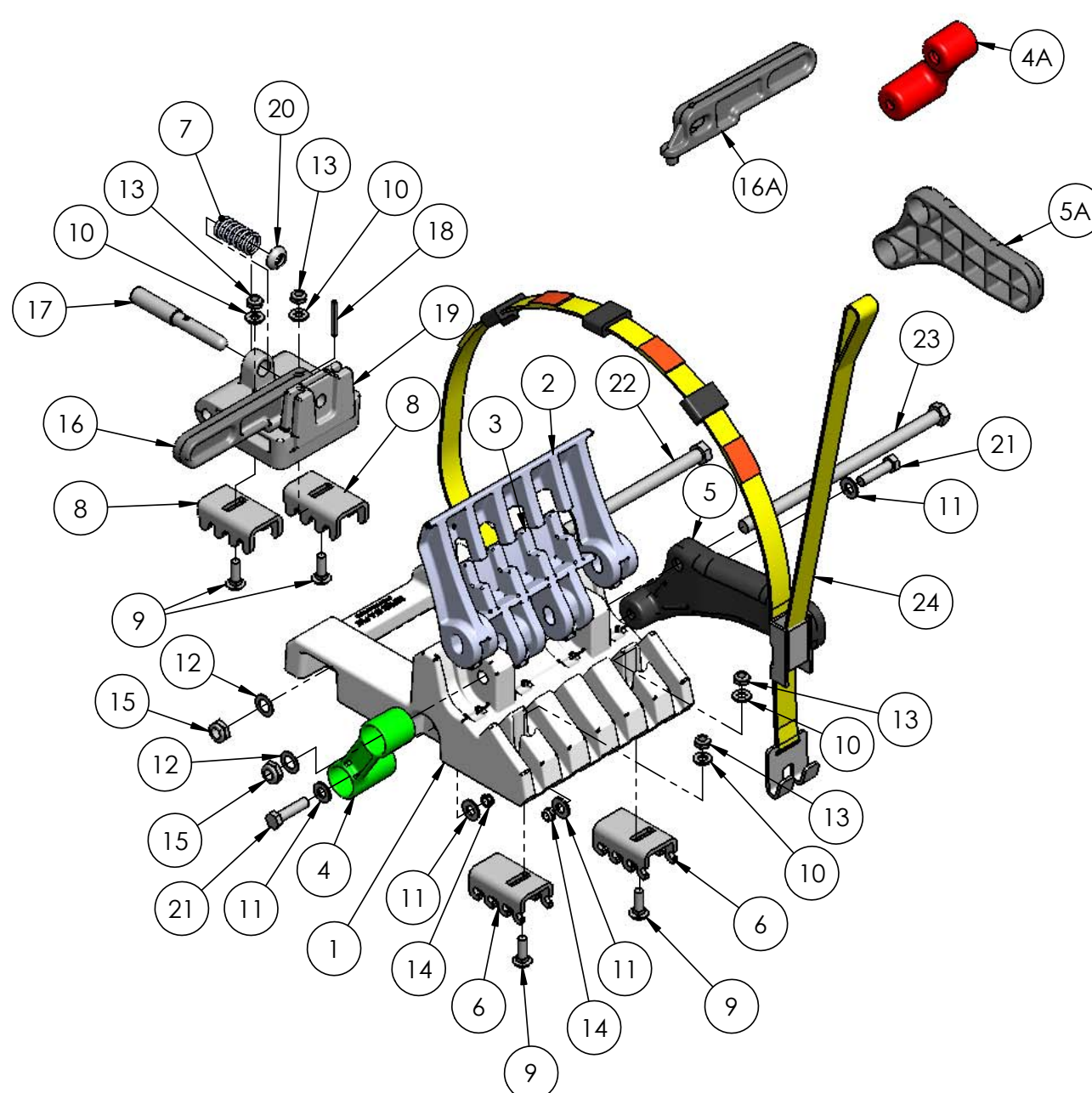
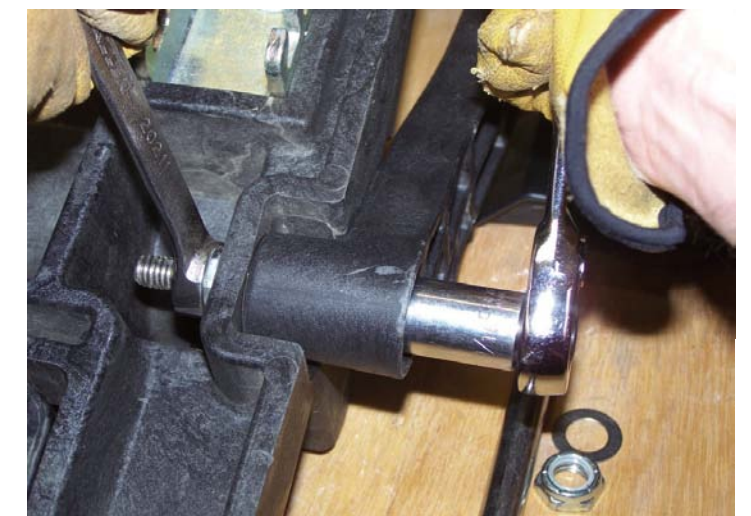
3) Replace Lateral Restraint and/or Side Handle.

4) Reinstall 3/8" Bolt and start Nut. (assure washers are present)

5) Tighten.

6) Reinstall Face Plate Pivot Bolt as stated above...

Note: Face Plate Pivot Bolt must be loosened so that Face Plates rotate freely.



ITEM NO.	PART NUMBER	DESCRIPTION	QTY.
1	ZT-626	BASE	1
2	ZT-628	LONG PADDLE	1
3	ZT-629	SHORT PADDLE	1
4	ZT-631-GRN	SIDE HANDLE- GREEN	1
4A	ZT-631-RED	SIDE HANDLE- RED	1
5	ZT-630-GRN	LATERAL RESTRAINT	1
5A	ZT-630-RED	LATERAL RESTRAINT	1
6	ZT-637	FRONT TEETH	2
7	ZT-634	SPRING	1
8	ZT-636	ARTICULATION STUDS	2
9	ZT-638-1	CARRIAGE BOLT 5/16-18 X 1	4
10	ZT-639-516	5/16 WASHER	4
11	ZT-639-38	3/8 WASHER	4
12	ZT-639-12	1/2 WASHER	2
13	ZT-568-516	5/16-18 NYLON L/N	4
14	ZT-568-38	3/8-16 NYLON L/N	2
15	ZT-568-12	12-13 NYLON L/N	2
16	ZT-632-GRN	RELEASE HANDLE	1
16A	ZT-632-RED	RELEASE HANDLE	1
17	ZT-633	ARTICULATOR PIN	1
18	ZT-641	3/16 X 1-1/2 SPRING PIN	1
19	ZT-627	ARTICULATION	1
20	ZT-635	PIVOT BALL	1
21	ZT-458-1 1/2	3/8-16 X 1-1/2 HEX CAP SCREW	2
22	ZT-457-7	1/2-13 X 7 HEX CAP SCREW	1
23	ZT-457-10	1/2-13 X 10 HEX CAP SCREW	1
24	ZT-654-FX	STRAP- FIXED ASSEMBLY	1